



THE NATIONAL PIPE ARCHIVE

Registered Charity Number 1043065

Accession Number: LIVNP 2012.06.225

Description: Notebook containing drawings and descriptions of pipes from London of early pipes with stamped marks, compiled by David Atkinson.

Comments: This is Atkinson's book LONDON I - London Pipes with makers' marks stamped.

Key Words: Clay tobacco pipe; London; Rogers; early pipes; Bull; Queenhithe; sun mark; gauntlet mark Barber; Page; three letter mark; Hebblewhite; Gee; Dutch pipe; Hunt; SV mark; Laurence; Nunney; Wyld; Geale; Cutts; Branston; Burrill; Wheticker

Scanned: PDF March 2017

Any images in this PDF must not be lent, copied to another party, sold or reproduced in any way without prior permission from the National Pipe Archive and the copyright owner, if applicable. Reproduction or publication in any medium is expressly forbidden without written authorisation and should include an acknowledgement worded 'Courtesy of the National Pipe Archive' and quoting the relevant accession number.

LOOK FOR THE NAME

DENBIGH**Commercial Books**

| Ref. No. | Size | Leaves |
|-------------|--|--------|
| D. 618/60 | 5 $\frac{1}{4}$ " x 3 $\frac{1}{2}$ " | 60 |
| D. 18/64 | 6 $\frac{3}{4}$ " x 4" | 64 |
| D. 18/90 | 6 $\frac{3}{4}$ " x 4" | 90 |
| D. 38/90* | 7" x 4 $\frac{1}{2}$ " | 90 |
| D. 38/140 | 7" x 4 $\frac{1}{2}$ " | 140 |
| D. 68/90* | 3" x 5 $\frac{3}{8}$ " | 90 |
| D. 68/140* | 8" x 5" | 140 |
| D. 34/90 | 9" x 7" | 90 |
| D. 34/120* | 9" x 7" | 120 |
| D. 64/120* | 10" x 8" | 120 |
| D. 124/120* | 12 $\frac{3}{4}$ " x 5 $\frac{3}{4}$ " | 120 |
| D. 124/160* | 12 $\frac{3}{4}$ " x 5 $\frac{3}{4}$ " | 160 |
| D. 1/50* | 12 $\frac{3}{4}$ " x 8" | 50 |
| D. 1/100* | 12 $\frac{3}{4}$ " x 8" | 100 |
| D. 1/140* | 12 $\frac{3}{4}$ " x 8" | 140 |

Ruled Faint, Faint and Single Cash.
*Faint & Double Cash.

Indexed All Sizes.
Faint Ruling only.

When re-ordering
this book ask for number:—

D18/90 FAINT

If this book is indexed,
please state INDEXED with
the above reference.

*London pipes
with
makers' marks
stamped.*

D. R. Atkinson,
116 Phyllis Avenue,
Peacehaven,
E. Sussex. BN 7RQ

~~D. R. Atkinson,~~
~~6 Wetherby Place,~~
~~London, S.W.7.~~

LIVNP 2012.06.225

I. R.

Poss. John Rogers.

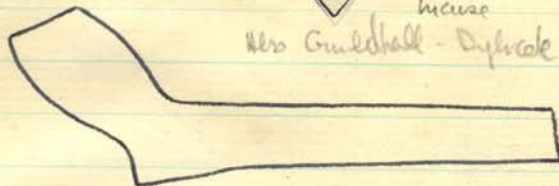
c.1600

-20



incuse

Mrs Guildhall - Dyfede



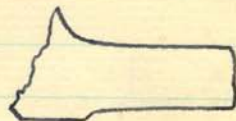
City.
Oatlands Palace

Similar smaller mark on small round base, below.



relief.

Battersea
(river)



Dyfedic Bish. Man
Broggy Cole

Oatlands Palace
Basing House

Thin stems with thick base.

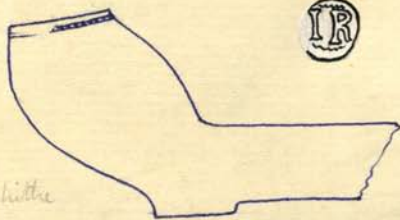
See my chest



c.1620

3 Granes.

Small round base. Incuse mark. Wide base



incuse mark
c.1650

Queenhithe



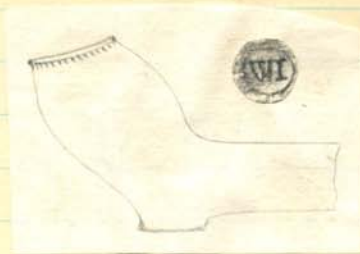
Polished bowl with same incuse mark as →
a. tiny heel. c.1620.

Queenhithe, Elkins Coll. (Ex)
Oatlands Palace

0

5cm

© National Pipe Archive



Ex-Ekins Collection, River Thames.

W.I.

c.1600-30



relief



relief



relief

Queenhithe
C. 1600
W.I. as sheet
Ekins coll.
Hampstead (Rote)

E.W.

c.1620-



relief

St Bride's.

Also - Bankside.

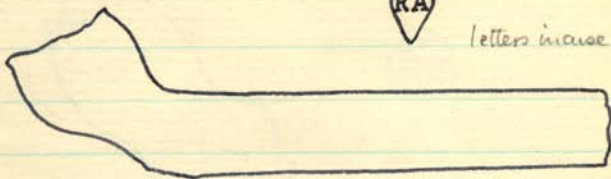
Also similar smaller mark QH.

R.A.

c. 1580



letters in case.



Battersea

Handmade. Thick stem, thin bore; mark on
base

Duplicate in Guildhall Museum polished stem

Similar example from Portsmouth has incised
initials IL:



Handmade polished pipe. Fairly narrow bore.
(Portsmouth Museum)

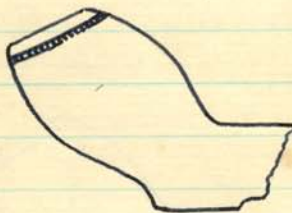
R.B.Poss. Robert Bull, Wapping, 1639. - but late.

c.1620-40



relief

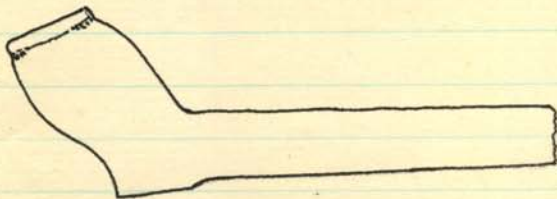
Queenhithe



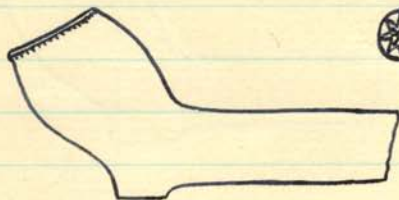
relief

Queenhithe

Also Gateway House (G. 1101)

One example as the above (top) one
found in Yorkshire by P. Rayner.

Pipe from Thames with upper mark (c.1610-20)

Sun marks.c. 1600
- 20

relief/incuse

mark on heel

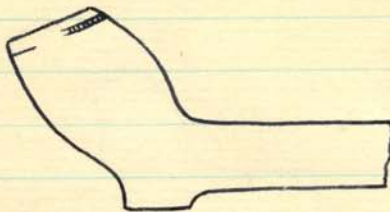
Queenhithe
Battersea (river) - Cuddell.
Wapping - similar to die



relief/incuse

mark heel

Queenhithe. Thick stem, very wide bore.
Cuddell.

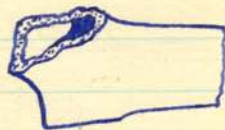
c. 1620-
40.

relief

Queenhithe

Also long Alley - Monmouth B.M.

c. 1620-40



relief

Queenhithe

Also a bowl, below



c. 1600



relief

Wide bore

Battersea (river)

c. 1600



wide bore

Greenhithe



Incised T stamped over S.

+ Similar variants occur on
early London pipes



Greenhithe



Tiny relief mark on early bowl +

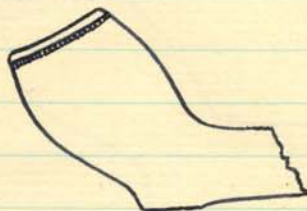
c. 1600

marks

c.1620



relief



Barnes
Cirello Hall
QH

Also occurs slightly
smaller

c.1620-40



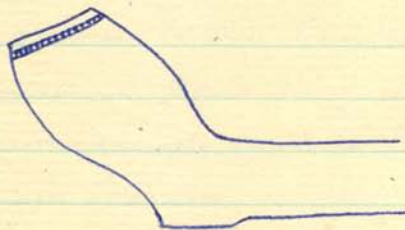
cross in relief



Queenhithe
Oatlands Palace



relief

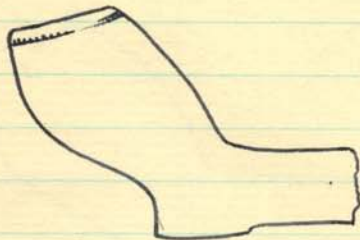


Queenhithe ^{Ex} (Naraway collection).

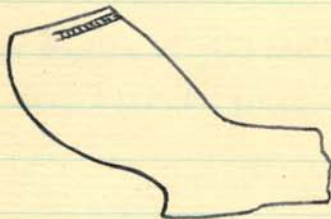
Garnthelt.

Amesbury.

c. 1660



Queenhithe

Queenhithe
and
Nonsuch Palace

These may be true Garnthelt marks, or
imitations. Bowls are of the Amesbury type.
Similar example found in London in the
Brendall Collection.

Probably London products copying
the Wiltshire originals.

I think a bit early looks
like a wither

M. B.

Poss. Matthias Barber, Freeman, 1682.

c. 1670.



relief

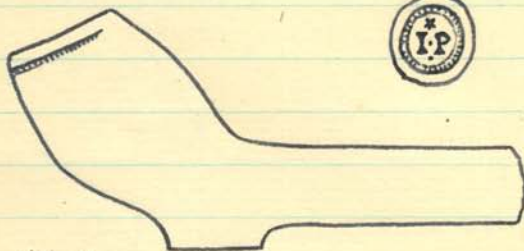
Queenhithe

Large bowl with fine, polished, finish.
Also Clay Bank, Virginia, U.S.A.

John Page

Hull.

c.1670



relief

Queenhithe (2)
Narrowway Coll. & H.

relief



Queenhithe

The upper mark is matched at Hull.

relief

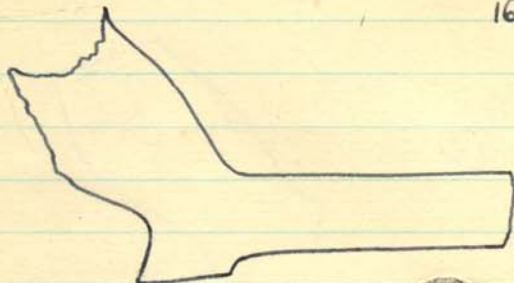


Queenhithe

Earlier IP maker, London, c1620.

T.H.Thomas HuntMarlborough.

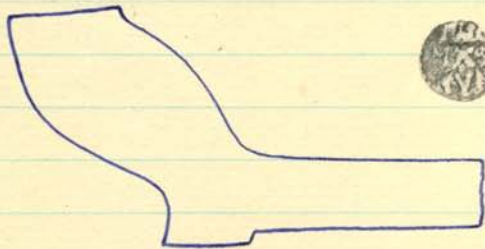
1667-96



incuse

Queenhithe

This mark is a facsimile of Thomas Hunt's signature, as seen on an apprentice indenture of his at Marlborough. Examples of the mark occur at Marlborough.



incuse

Queenhithe

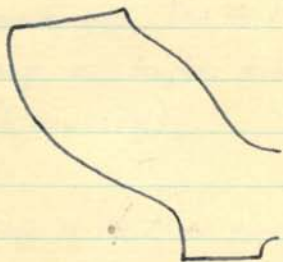
Type found commonly at Marlborough.

I.H.John HuntBristol

c. 1650-70



incuse

Battersea Park (2)
QH Ethn. Coll.

incuse

Battersea Park
Gripball Mus.

I. H.John HuntBristol

c. 1650-70



incuse

Queenhithe
Curlball Museum Sa.

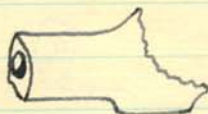
A mark with Tho. Hunt in similar style
lettering on highly polished bowl from
QH (Eccles Coll).

Many of the Hunt pipes were made at
Norton St Philip where the family lived
and worked, descended from the first Jeffrey
Hunt, born in 1599. At different times
various sons etc moved and set up business
at Bristol, Marlborough, Devizes, Taunton etc.

L. H.

c. 1620

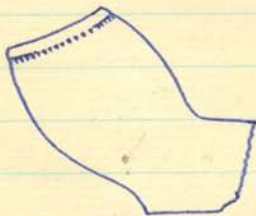
Relief



Queenhithe

B. C.

c. 1640



Relief

Queenhithe

Recorded from Hull.

Elkins Coll. Blackfriars

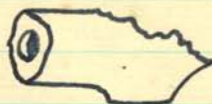
Salisbury.

Shaftesbury

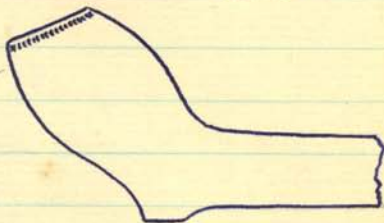
W.K.

c. 1600-20

'Relief



Queenshithe
 Guildhall (see sheet)
 Norwich Palace
 Oatlands Palace

E.BRecorded at Hullc 1630

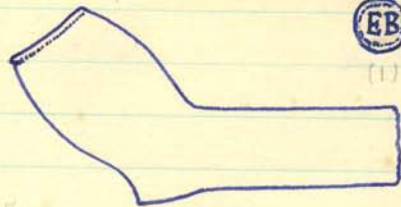
relief



(1)



(2)



Queenshithe

Smaller pipe c1620. (2) on identical bowl.

Queenshithe
 Blackfriars

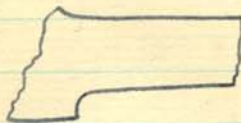


relief

Wide bore, no milling. This is the same ^{type} bowl and
 mark as that illustrated in 'Various Marks' page 1.
 (Source unknown)

I.W.

c. 1600-20



Relief

thin stem and bore

Queenhithe

Hss & Coventry (5 examples)

Similar mark from Queenhithe (9.70) has

double lined frame, below:



relief

Queenhithe

c. 1600-20



Queenhithe

relief

Also Aubhall Men.

E.V.

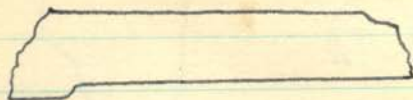
c 1620



relief

Queenhithe

c.1600-20



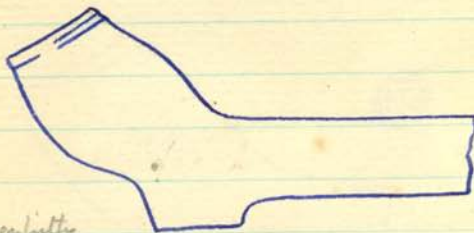
Battersea Park

Part incuse/relief

Similar - Guildhall

Bristol Museum - Southfield

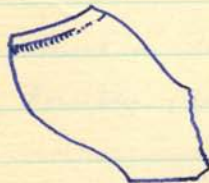
c.1640-50



Queen's litho

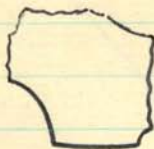
Rather crude bowl with relief mark.

c.1620

Cromwell Rd
Earls Court.Small bowl with
flower type mark.

T. ?

c. 1670



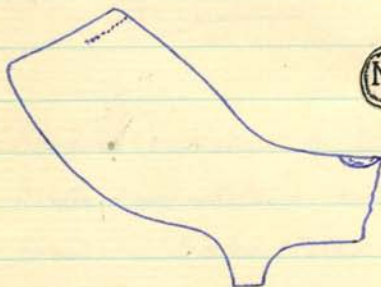
relief

Thick stem and bore

Queenhithe

M. G.

c 1670-80



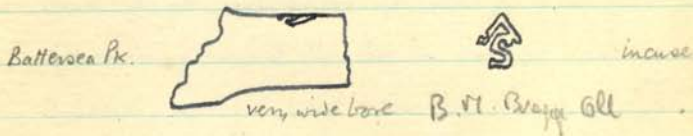
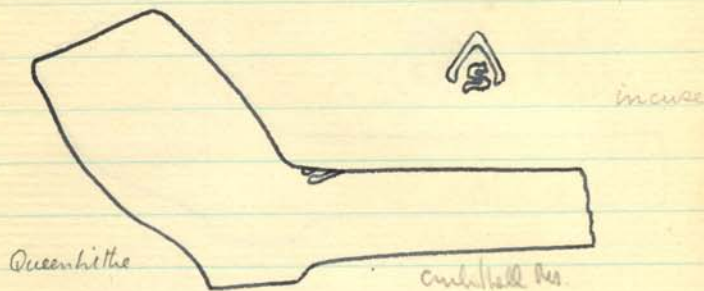
relief

Queenhithe

Relief mark on stem - very rare on this type of pipe. Possibly Moses Gee, 1681.

A.S.
(S.V.)

c. 1600-70

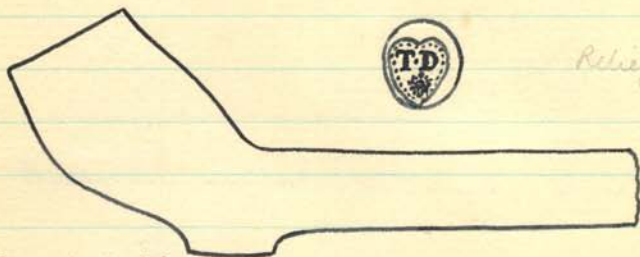


Several varieties of this mark, c. 1600-70. Bowls vary in size, milled or not. Several found in London; also in Lincolnshire, and recorded from Hull. Marks at this period are rarely found on the stem.

One also in a collection at Taunton museum. Also Nottingham, and in USA
Considered now to be S.V. (Clay Bank, Virginia)

T.D.

c.1670



Relief

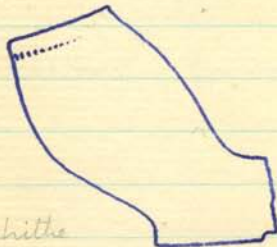
Queenhithe (8)

There are 3 varieties of this mark, which have small differences of design.

No milling round the bowls. Several moulds used:

A taller, upright bowl also has this mark. (Elkins coll.)

Common at Aylesbury. The mark also is duplicated at Oxford. I doubt if this is a London maker.

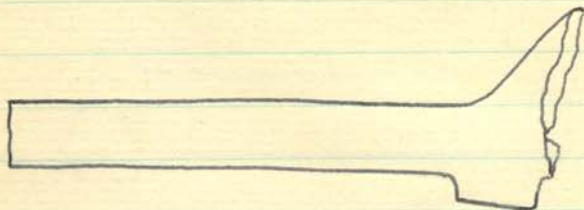


Queenhithe

Similar bowl but incuse mark on heart-shaped heel.

I.C.

c. 1680-1700



Queenhilthe



Crude mark in relief, inverted.

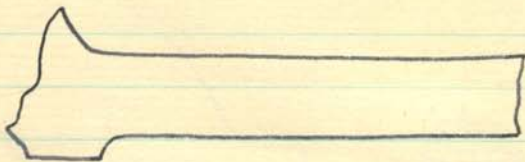


Queenhilthe

Large northern type bowl. Relief mark on heel.

I.C.

c.1660-70



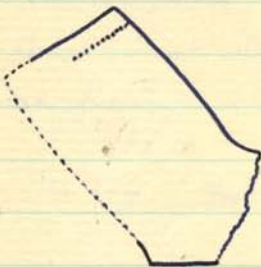
City

relief

Also *Croftall Museum* see notes. Pipe of c1640-50 has this mark



Broken bowl with
part of this mark
on heel. Fine quality.



Queenhithe



Polished bowl. Relief mark
on large flat base.

This mark is almost identical with one of
John Chapman, Hull, c1670.

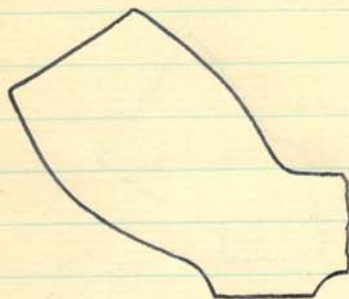
A small bowl from Barnes, c1640, also
has this mark on the heel. Also QH (Eckers Coll)

0

5cm

I.G.

c. 1680-1700



Relief.

Battersea Park

This is a 'giant' example of the normal C17th shape. Thick stem, wide bore. Fine polished finish.

? A wren type. 'York buttons'



Putney

Small square relief mark.

c. 1650-70

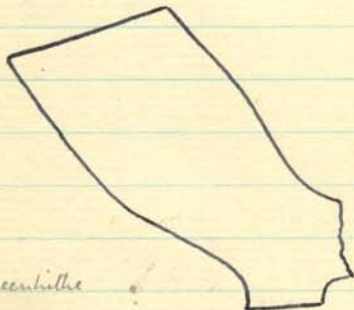
W. L.Poss. William Laurence, Freeman, 1697.

c. 1700



relief

Queenhithe



relief

Queenhithe

An example is recorded from Weybridge
by J. Higgins. (p280 BAR 97)

See also page 74.

A. B.

c. 1700



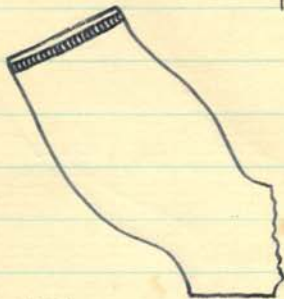
relief

Queenhithe
Co. Hurren - Yuh

R.N.Richard Nunnery, Bristol.

c.1680

(155-99)

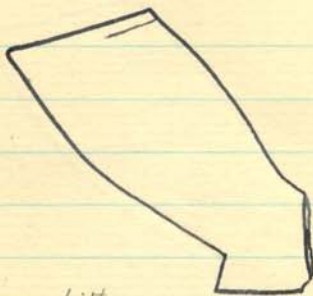


incuse

Queenhithe.

T.W.Poss. Thomas Wyld, Freeman, 1682.

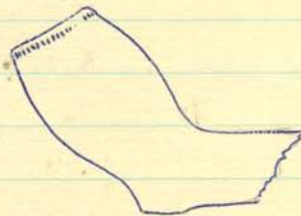
c. 1700



relief

Queenhithe

Green Coll - 2 x copies see attached clc.



relief

QH

An earlier relief TW on very small
heel c1620.

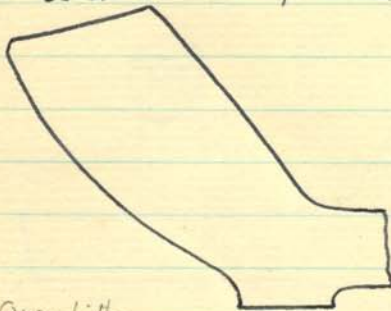
I prefer John Davies.

I. D.

Poss. John Davies, Freeman, 1689.

c. 1700

or John Dimmock, Freeman, 1705.



relief

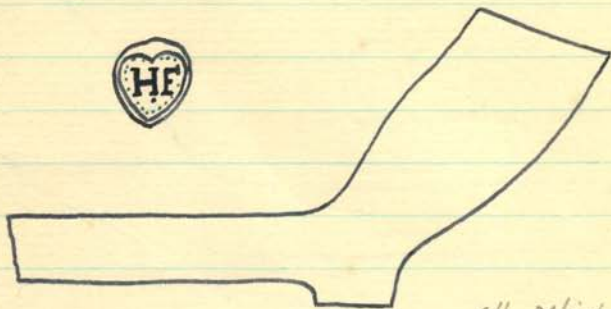
Queenhithe

James Dimmocks died 1698

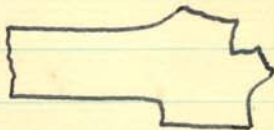
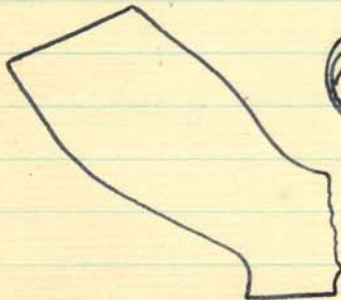
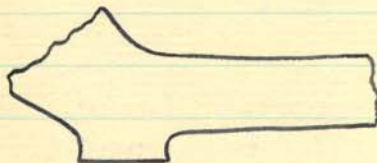
H. F.

c. 1700

(Probably Aylesbury)



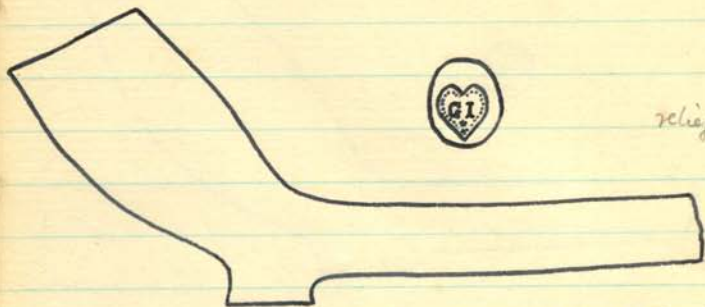
all relief



Same type bowl, four different marks. All found
at Queenhithe. Other varieties Eekins Col. etc etc
Also Aylesbury

G. I.

c. 1700



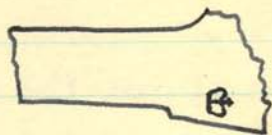
relief

Queenhithe
 Taplow
 Highbury
 Sunning

Several examples of this
 mark.

10b. Thomas - Green Goll

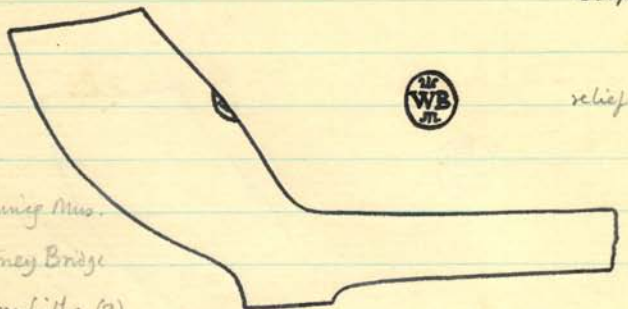
Queenhithe



Same mark but has crown moulded
 each side of base in addition.

W.B.

c.1700



Cunning Mus.

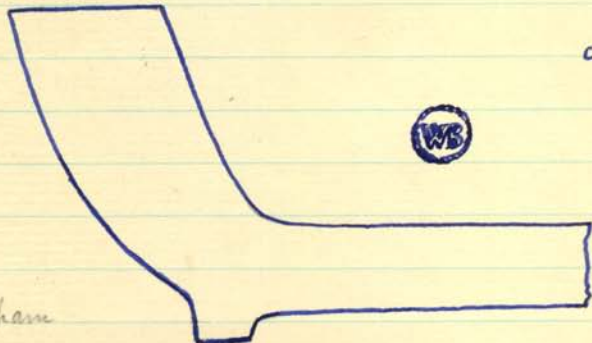
Putney Bridge

Queenhithe (2)

Mark stamped on back of the bowl.

Poss. William Britaine, Freeman, 1693
or William Bill (Appr. T.B.Co. 1694)

The Cuning Museum example has a
Spur like the SA 1683 pipes (p.44).



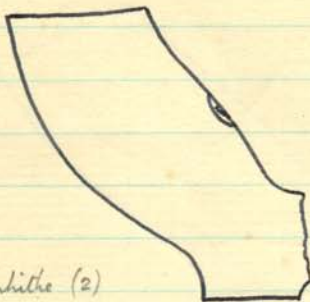
c1720

Fulham

Small incuse mark on heel base.

W.C.

c. 1700

*relief**Queenhithe (2)**Mark stamped on back of the bowl.*

E.B.Probably Kingston-on-Thames.

c. 1700

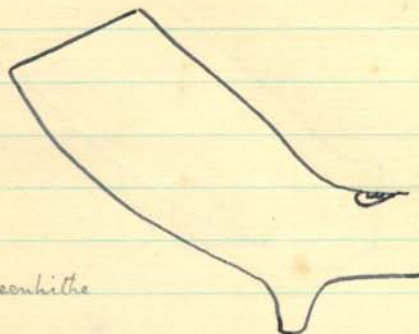
1.

1a.



relief

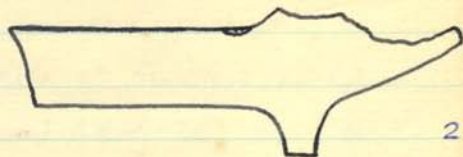
1.



Queenhithe

2.

relief

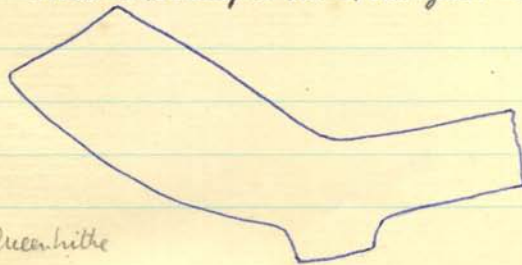


2.

Queenhithe

2 also occurs back of bowl, spur type.

Marks stamped on stem just by bowl.



Queenhithe

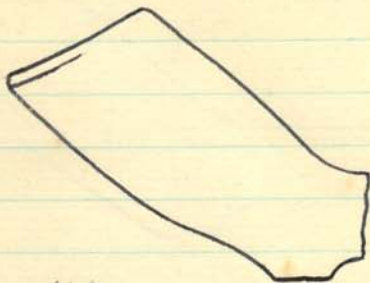
This bowl
has mark 2
on the heel.
c. 1690.

Mark 1 also
occurs on
heel.

0

5cm

c. 1700



relief

Queenhithe

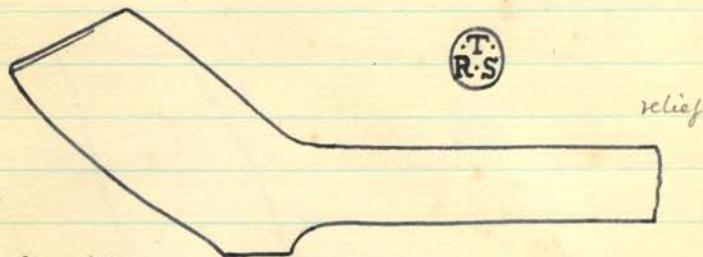
Pipe with fine, polished, finish. Mark stamped on small base.

This is probably an early product of Lawrence Geale of Guilford as he was appr. to Edmund Nave who made exactly this polished type and whose mark is identical (see p. 73). Geale became a Freeman in 1700!

T
R · S

37.

c. 1670



Queenhithe
and Battersea Park.
Putney Bridge

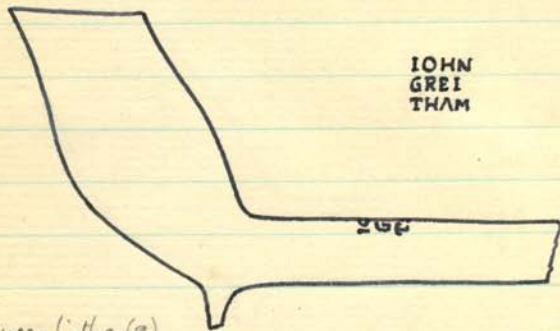
Mark stamped on small heel. Fine polished
finish to pipes. Initials are R. & S. T.... (A
husband and wife) (This is a common arrange-
ment or tokens of the period).

Also Railway Works, Cannon St 1864. Said
to have been found near four guineas of James II
British Museum.

Another from Moorfields 1865 - British Museum
Breyer Coll.

I. G.John Greitham.

c. 1700

Poss. at ReadingQueenhithe (2)
Putney

Wiltshire type bowl and form of mark -
whole name stamped on stem.

Another example on stem shows the mark has
a square frame like some Marlborough ones.

A quantity have been found at
Reading in excavation.

R.C.Richard Cutts (prob. of East Woodhay).

c. 1700

Mmr. Mary Harris in 1693.RICH
ARD
CVTTS

incuse on stem.

fine polished
finish.

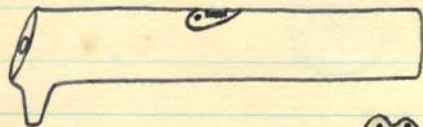
Battersea Park.

These pipes are found at Marlborough,
Winchester and Southampton. Many examples
have thinner stems.

R.P.

Poss. Robert Parbat, 1729. h. f. late

c. 1700



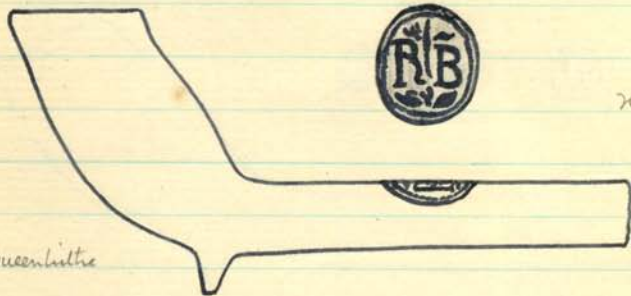
Queenhithe 2



relief

R. B.Poss. Robert Branston, Freeman, 1689.

c. 1700



relief

Queenhithe

Large mark on stem.

Shape? Vt. Country - Mark - York, Hull

↑
This mark is almost identical with one of
Robert Burnell of Hull, 1683, st. on heel.



c. 1720.

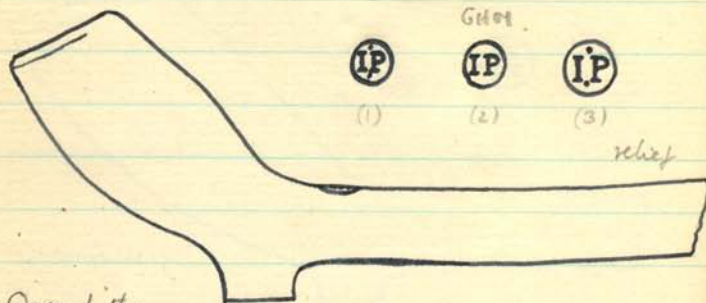
Barnes

See p. 68.

Relief mark, back of bowl, rare on this type.

I.P.

c.1680-90

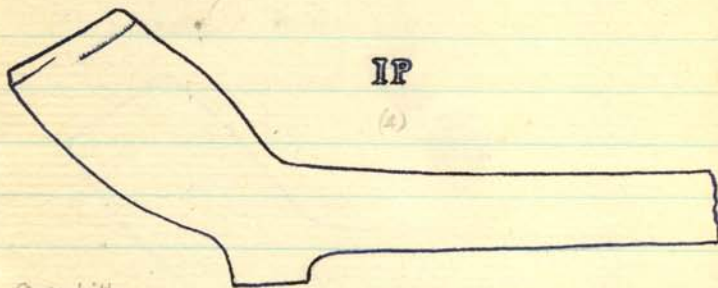


Queenhithe

This type of pipe is found with 3 different stamps, always on stem just by the bowl.

Bowls with or without milling.

Also Gunshall Green

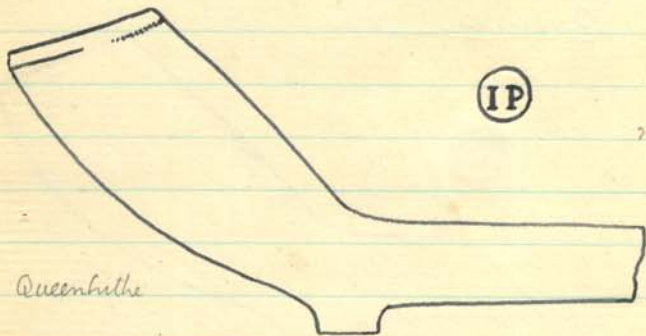


Queenhithe

Example with unframed incuse mark.

Die 2 also occurs on heel of an earlier (c.1670) polished pipe.

c. 1690

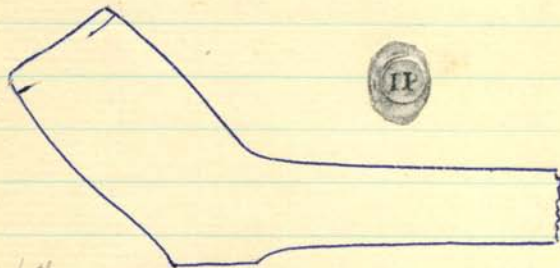


relief

Pipes have fine, polished, finish. Mark stamped on small base; different from any of those stamped on stems. Several examples found.

Thomas - Green Cell

Richard Nixon - Broom Cell



Queenhutte

Polished pipe c1670-80 has mark (2) page 42 on the base - same die exactly.

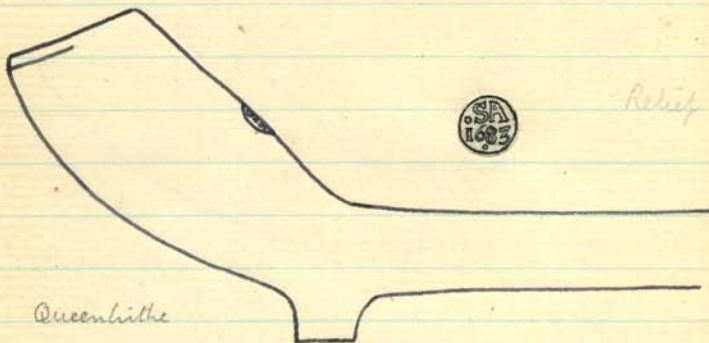
An S/A on the 10c - Banknote

C. 1730-70.

S. A.

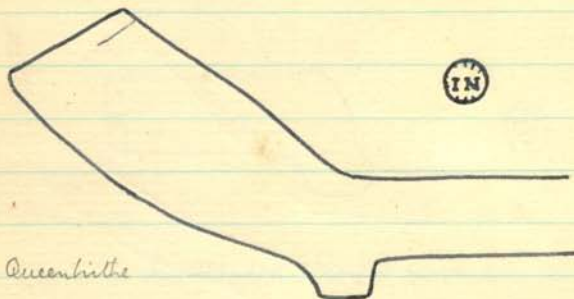
44.

1683



Fine polished pipes. Several examples with
stamp on back of bowl, ^{two} ~~one~~ on the base.
This is the only London dated mark known.

c. 1690.



1.

relief

Queenhithe

Small mark stamped on base. } also occurs inverted.



2.

relief

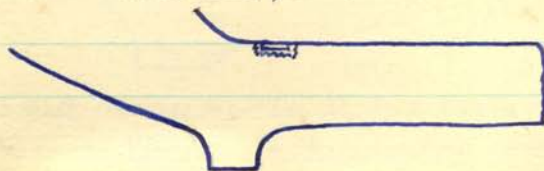
Queenhithe

Small mark stamped on base.



3.

relief



Small mark on stem.

1. Also occurs on stem just by bowl of pipe with large outstanding heel, c1700.

3. Similar mark on same type pipe has the 'N' reversed.



c. 1690



relief

Queenhithe

Small mark stamped on base.

Example with complete bowl, Etkin's Coll, Queenhithe.



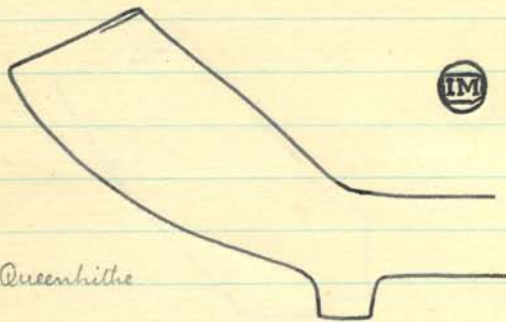
incuse

QH Dock

Small unilled West Country bowl. Mark incised
a heel. Williams Hunt, Taunton. c. 1670.

I. M.

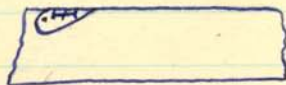
c. 1690



relief

Small mark stamped on base.

c. 1700



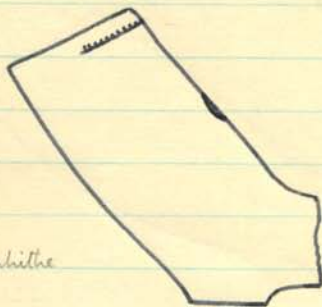
Battersea

Heart shaped relief mark on stem.

I. R.

48.

c. 1680



relief

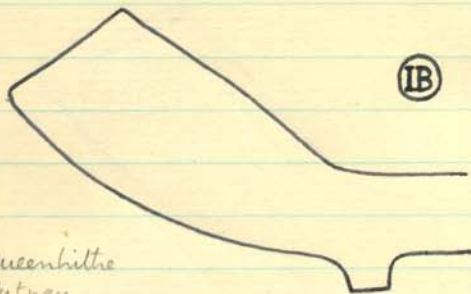
Queenhithe

Mark stamped on back of bowl.

I.B.

49.

c. 1690



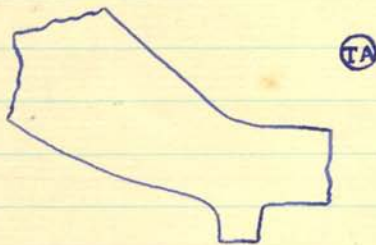
relief

Queenhithe
Putney

Small mark stamped on base.

T.A.

c. 1690



relief

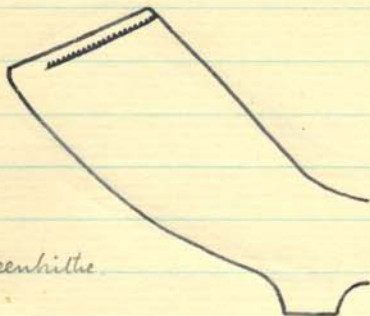
Queenhithe

Small mark stamped on base.

Also a base of earlier type bowl, polished,
the straight-sided 'heel' type c. 1680.

E.B.

c. 1690



(EB)

1. relief

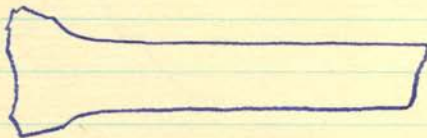
(EB)

2.

Queenhithe

Fine polished pipes. Small marks st. on base.
 A similar, but slightly smaller EB mark also
 found on small base with stem, wide bore.
 (below)

Duphodes. B.M. G.H.M. - Townsend Site
 Delaware, U.S.A.

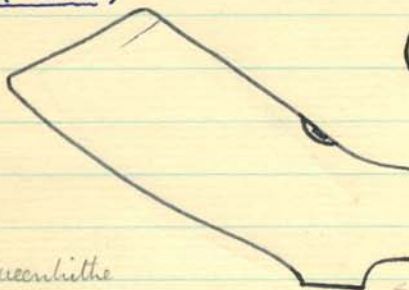


(EB)

relief

This may be an early pipe, c. 1600. The stem
 has a very wide bore relative to its thickness.

Possibly Richard Robinson of Eton, rec. 1689. c. 1690
(Bucks Q^r Sessions)



1. relief



1a
relief

Queenhithe

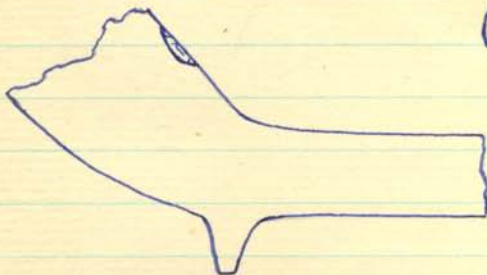
← all these bowls have
base inclined at a
downward angle

Both of these marks are
found stamped on the back
of same type of bowl.



2.
relief

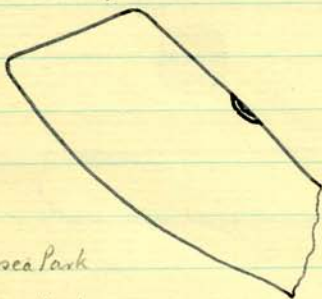
A mark like No 1 is slightly larger, as in the bowl.
Mark 1 also occurs on spur type bowl.



3.
relief

Pipe from Southwark, contemporary with 1 & 2.
This type is extremely rare with any form of mark
in London. Also Queenhithe Dock.

c. 1700



relief

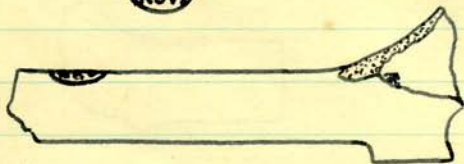
Battersea Park
& Queenhithe.

Mark on back of bowl appears to
represent a crown over tudor rose.

Some early C17th Dutch marks are identical.

T.W.Thomas Wingrove.c. 1720prob. of Church Wycombe, Bucks, took appr. 1706

incuse



Queenhithe

Mark stamped on stem. Two examples,
one on thinner stem. Thin bore.

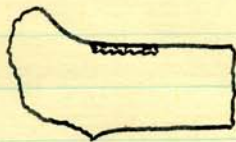
Also one with wider bore.

T.K.

54.

Poss. Thomas Kenton, free. 1692.

c. 1700



Queenhithe



relief
wide base

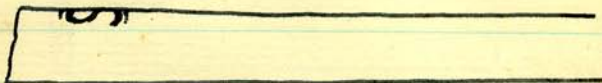
An unusual mark, monogram of T.K.

Poss. Stephen Helldewhite 1720.

c. 1720

SH

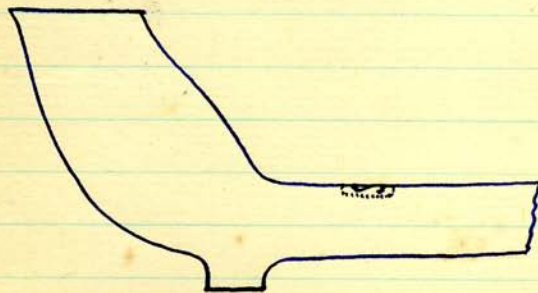
relief



Queenhithe (3)

Large mark, sans-serif letters. Think
stem but average bore.

Example with bowl shows it to be a form
of early Type 25 but with curvy bowl and
base (Etchins Coll.) below:



Two stems from Abingdon have this mark.



W. C.

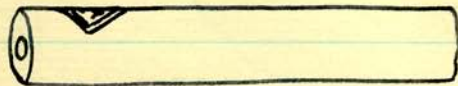
56.

c. 1700



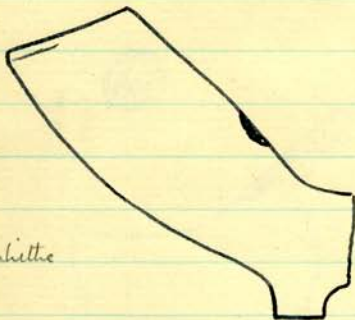
relief

Greenhithe



Thick stem with wide bore.

c.1670-90.

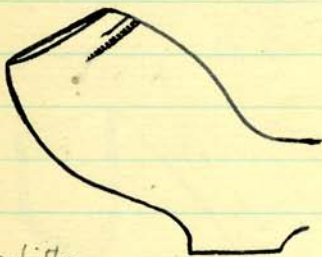


Queenhithe



relief

Three types of mark, found on back of same
type bowl, c.1690.



Queenhithe



relief

Earlier mark on bowl, c.1670.

A.G.

58.

c. 1690



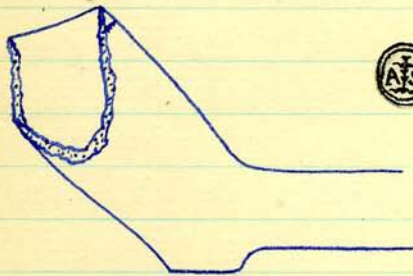
relief

Queenhithe

Mark stamped on back of bowl.

A.S.

c. 1680



Queenhithe

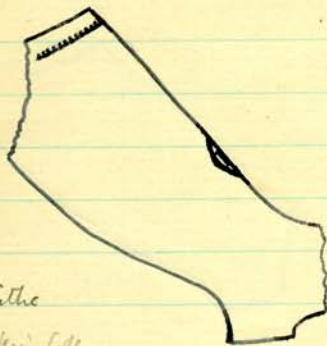
Relief mark on heel. Polished bowl.
Also Wills Museum Bristol
(from London, river)

M.S.

59.

Michael Simpson. appr. TBCo. 1694.

c. 1690



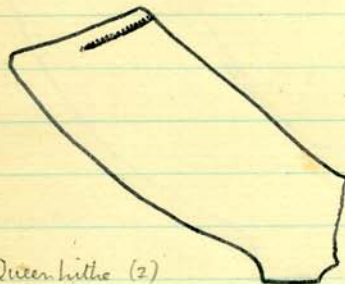
relief

Queenhithe

Also Elkhin Coll.

Mark st. on back of the bowl.

c. 1690.

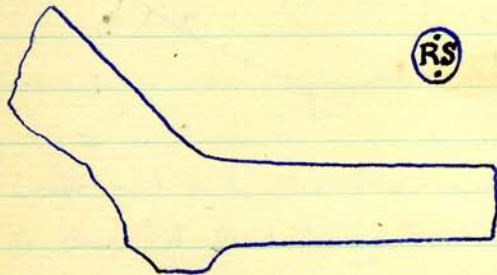


relief

Queen's pipe (2)

Small mark on base.

Also occurs as contemporary pipes with short stumpy spur.

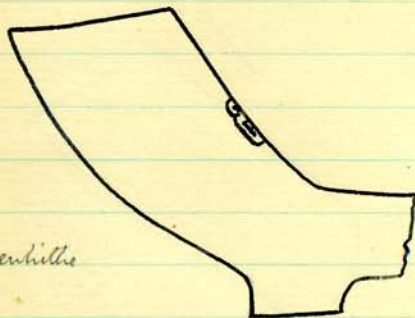


relief

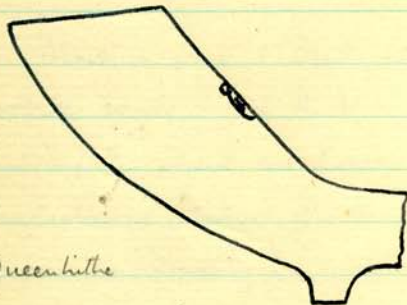
Queen's pipe

R.B.c. 1690 -
1720.

relief



Queenhithe



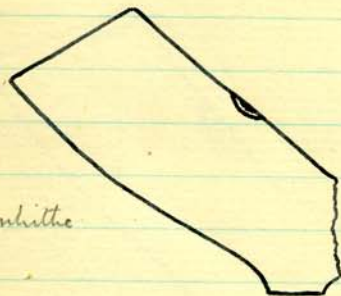
Queenhithe

Large and distinctive bowls marked on the back. A third type of bowl with this stamp is in Winchester Museum*. Same mark occurs on a pipe from Port Royal, Jamaica.

See p. 68.

* Also Cumming Museum, Type 25.

c. 1690

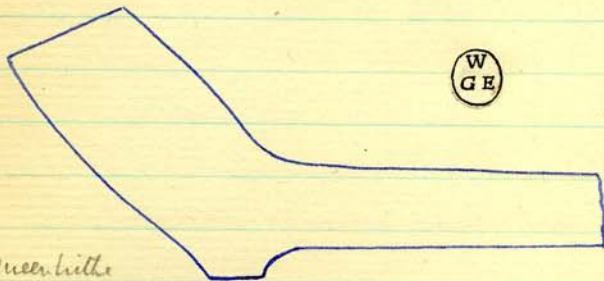


relief

Queenhithe

Mark on back of bowl. Lettering
probably reads 'T. & A. H.' (husband
and wife). There are traces of moulded
initials at sides of the base (not
shown in drawing)

c 1670



relief

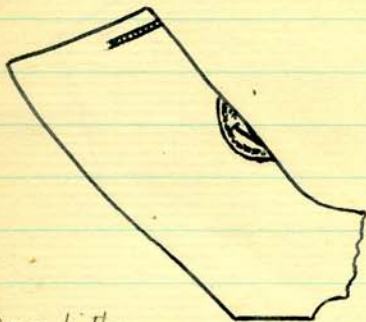
Queenhithe

Similar 3-letter on heel of polished pipe.

W.B.

63.

c. 1680



relief

Queenhithe

Largest mark on a bowl prior to the
C19th.

M.G.

c. 1690-1720

Poss. Moses Gee

1681~



Also Green Gll - Thames
Bankside - Seven Rf

Also British Museum 10c



Queenhithe



relief

Mark actually has
a very fine double
rim.



Queenhithe

A good example
of the change in
styles at this time
during the working
period of one maker.

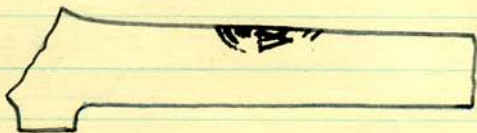
Two bowls with fine polished finish; both have
the mark with City of London shield on the base.

See also page 20.

W. I.

65.

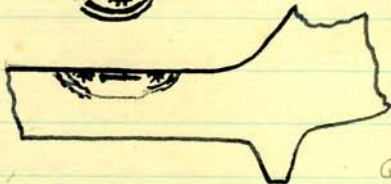
c. 1700.



Queenhithe

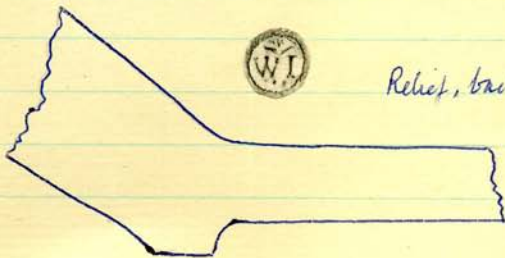


relief



Queenhithe

Pieces of two different types of pipe have incomplete impressions of this large stamp on the stem. Very similar to WB (page 63)



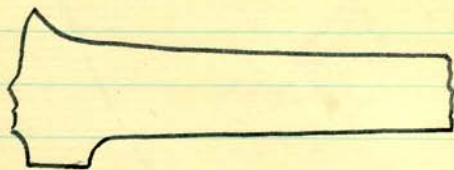
Relief, back of bowl.

QH.

W. P.

Guilford?

c. 1700



Queenhithe

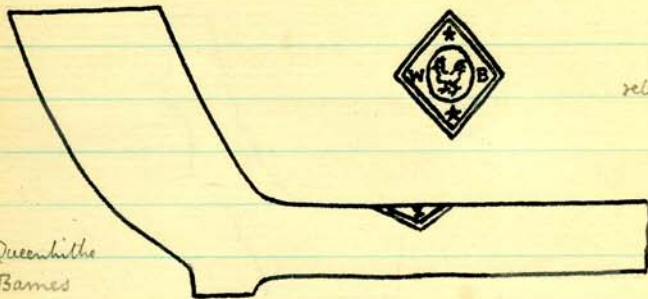


relief

On base.

There are several examples of this mark,
on the bases of fine polished pipes, in Guilford
Museum, all found locally, some slightly
earlier with C17th type heel.

c.1720



Queenhithe
Barnes

There are two varieties of this unusual
mark, with slight differences. Stamped on stem.
One has traces of muddled initials (not WB) on
sides of base, indicating a second-hand mould.

? Puckchance north - The Cock.



Die i



Die ii

The bird varies slightly, also
the small stars.

c.1720



relief

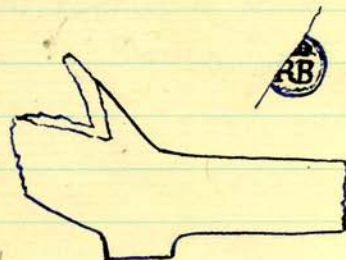
Queenhithe

Thick stem, thin bowl.

Mark on back of bowl.

See p. 41.

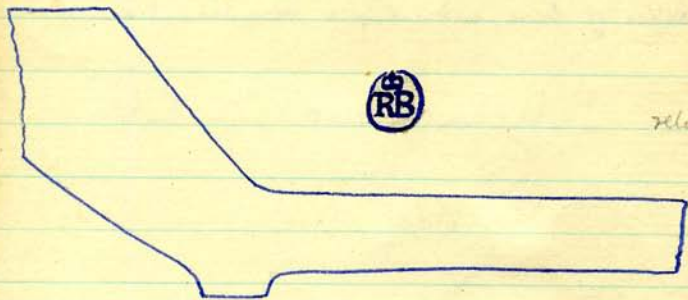
Similar example: Mermaid Court with mon. ins.



relief

Queenhithe

Mark on back of bowl. This mark is actually a Crowned RB, not quite the same as that shown on p. 61.



relief

Similar example from Thames 1971.

c.1720



Queenhithe



incuse

Single letter stamped on base. See p. 87.

Also Cuming Museum, early

Type 25, with small star moulded each side.

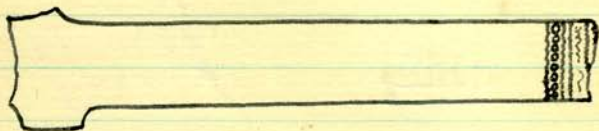
This marks appears to be the same as that found on a Broeley Type 5 heel, c.1700+.

C.1700

Queenhitte



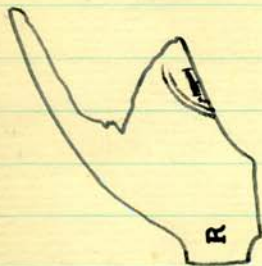
relijf



Fine polished pipe with dec. on stem, hand
applied. Mark on small base.

Dutch & Danish.

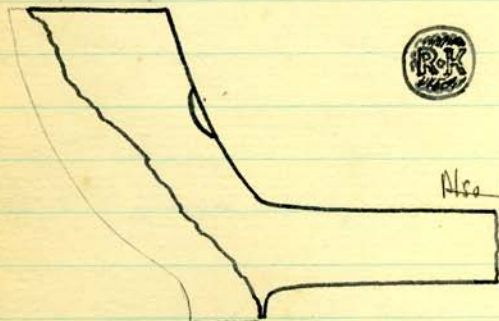
Holland - Sloterdijk type c1715.



relief

Queenhithe

Large mark st. on back of bowl and
initials moulded at sides of base.



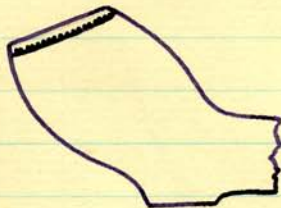
Queenhithe

Also Gough's last
word.

Mark partly in relief, initials incuse.
A similar example has complete bowl.



c. 1640



Putney

Incuse horseshoe

Probably a Taunton maker. Pipes with this mark are common there.

Also Thomas - Allen coll.

c. 1620



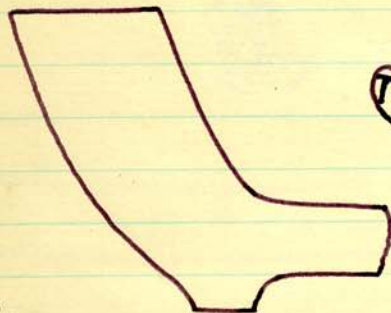
Queerhill

Incuse P stamped sideways on heel.

Another example as slightly longer bowl.

T.S.

c 1720



Mark in relief
on heel.



Queenhithe
(Horne collection)

E.N

c 1720

Edward Neve Guildford
1677-1716



Relief mark
on heel.

Queenhithe. Polished pipe.
Same mark, Leatherhead, 1972.
Weybridge Outlands Palace site

See p. 36.

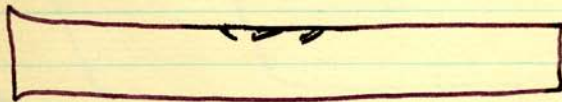
W. L

c.1700

Possibly William
Lawrence
(p. 26)



Relief.

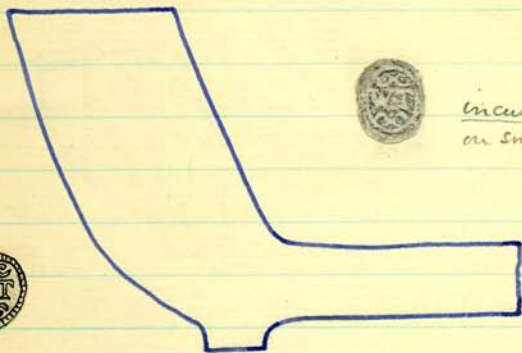


Queenhithe

W. T

c. 1720-40

William Tappin



This is the only mark stamped on London pipes which is really quite common. Various sites.
Also British Museum, Bragge etc
see attached sheet

Queenhithe

Battersea

Bow, E.

Fulham

Note: a later version occurs on tall thin walled bowls of the same type but with thin stem and narrow base - the mark is always too large for the base area. c 1760.

T.W.

I.B.

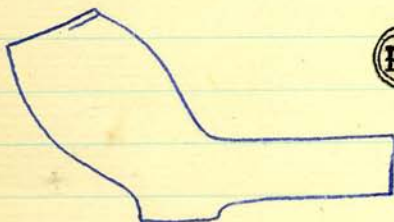
76.

c.1620-40



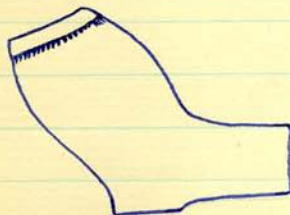
relief

Queenhithe



relief

Queenhithe. Polished bowl. No milling.



relief

Queenhithe
Hurlingham

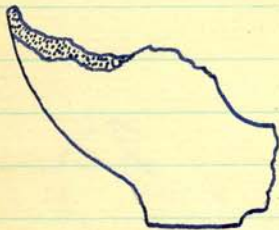
0

5cm

© National Pipe Archive

V. P.

c. 1660-70

*Mark in relief.**Queenhithe**Stem has wide bore**Northern type.*

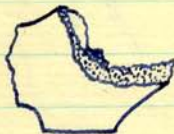
0

5cm

E.W

78.

c. 1700
?



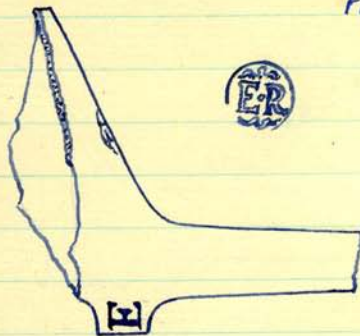
Stem has wide bore.

Mark in relief on base

Probably earlier see attached sheet

E. RProbs. Edward Randell, ex Bristol. Took appr. in 1719.

Pipes c1720-50.



Incuse

Thin stem.

Battersea
(river)

Moulded initials E/R. Incuse mark stamped on back of bowl. Very rare for this period in London pipes.



Large thick-walled bowl, thick stem. Relief mark. Fulham (Grabbice). Deposit of c1710-20.

Wapping
(river)

Large thick-walled bowl from Wapping with same mark as above. An earlier pipe. Similar example, East London.

S. WHETICKERDied 1697, St James, Westminster.

c. 1670-80



London



Same mark.

Hyde Park
(Brendall Coll.)

Also Repels Post - Currier House

West Country style pipes. Both above
examples found in London. ~~Marked~~ so
far unknown.

Also Atkins Coll. G.H.

P.C.

c. 1650



relief.

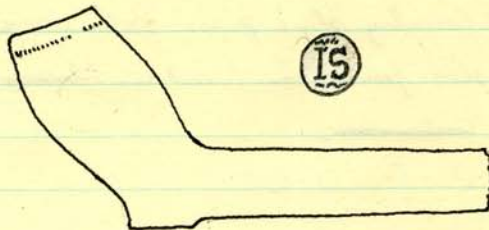


QH

Brendall collection.

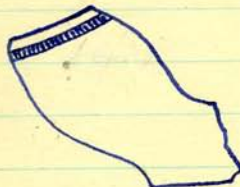
Similar mark and leaves.
Smaller bowl c. 1630.I.S.

c. 1620



Similar relief mark, 2 examples, from East London.

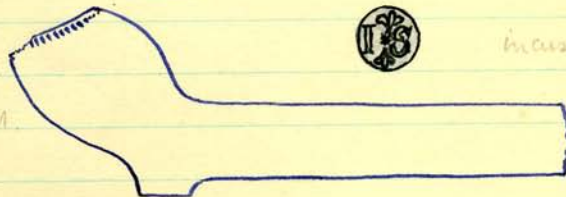
Queenhithe



relief

Queenhithe

Also G.H.M.



incise

Polished pipe. Possibly John Stuckey 1603.

c. 1620



incuse mark

Brendall collection.

Mark seems to represent a thistle.
Possibly of Scottish origin. James I reign.

Also Guildhall Museum
Wycher " "
Ashmolean " (from Warrington)

c. 1630-40



mark part incise
and part relief.

Brendall collection

Possibly Dutch. ? Shield of Arms of
Tobacopipe Makers Co.

c. 1630.



Small bowl with relief mark. The letters
S.C. are clear. There might be a third
one below, or it could be a symbol.
~~There is a third one below, or it could be a symbol.~~

Mark is B^S. Example from Blackfriars.

Lamb and Flag.

c. 1640



relief.



Queenhithe

Possibly Dutch.

Similar to those British Museum. B. and C. Coll
 e Bregge Coll

This motif also occurs on dec. bowls of 19th.

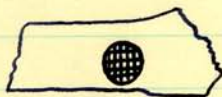
T.W.

c. 1700

*Queenhithe*

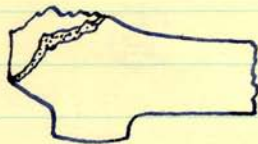
Diamond shaped mark in relief. Figure
over initials appear to be a horse and rider.
Complete examples known as Type 25. (A&O)

c. 1600
(or earlier)



Queenhithe

Early pipe - tiny heel and wide bore.
Grill mark in relief stamped in an unusual
place, on side of stem.

Wc. 1720

Queenhithe

? Farber.

A rather crude single 'W' deeply incised on the small base of the common C18th type of upright bowl which would usually have moulded initials at the sides of the base. See p. 69.

F.E.

c.1720



relief



Thick stem with a fairly narrow bore.

F.W.

c.1680



relief

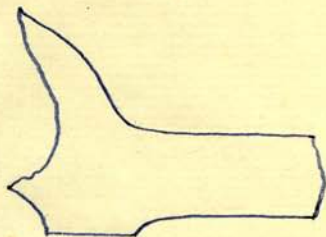


Relief stem mark on late 17th pipe.

See also Book II

R.G.
or R.C.

c. 1650
or later



Queenhithe, (2)



relief



Queenhithe



relief

Similar mark st. inverted.
Large 'R' small 'C'

INDEX

| | | |
|-----|---------------|---------|
| HTA | 62 | |
| RA | 3 | |
| SA | 44 | T.A. 49 |
| AB | 27 | |
| EB | 35, 50, 16. | |
| IB | 49, 76 | |
| MB | 10 | |
| RB | 4, 41, 61, 68 | |
| WB | 33, 63, 67 | |
| IC | 23, 24 | |
| PC | 81 | B.C. 15 |
| RC | 89 | |
| WC | 34, 56 | |
| ID | 30 | |
| TD | 22 | |
| EE | 57 | |
| FE | 88 | WGE 62 |
| HF | 31 | |
| AG | 58 | |
| IG | 25 | |
| LG | 36 | |
| MG | 64, 20. | |
| RG | 89 | |
| H | 69 | |
| LH | 15 | |
| SH | 55 | |
| WH | 46 | |
| GI | 32 | |
| WI | 2, 65 | |
| RK | 71 | |
| TK | 54 | |
| WK | 16 | |

94 AT

21 2.89

WGE 52

| | | | |
|-----|------------|----|----|
| WL | 26, 74 | | |
| IM | 47 | | |
| EN | 73 | | |
| IN | 45 | | |
| RN | 28 | | |
| IP | 11, 42, 43 | | |
| RP | 40 | | |
| VP | 77 | P | 72 |
| WP | 66 | | |
| ER | 79 | | |
| IR | 1, 48 | | |
| RR | 51 | | |
| IS | 81 | AS | 58 |
| MS | 59 | | |
| RS | 60 | | |
| TRS | 37 | | |
| TS | 7, 73 | | |
| WT | 75 | | |
| SV | 21 | EV | 18 |
| W | 87 | | |
| EW | 2, 78 | | |
| IW | 17 | | |
| TW | 29, 85 | | |
| FW | 88 | | |

P 72

AS 58

EV 18

| | |
|--------------------|-----------------|
| Richard Cutts | 39 |
| John Hunt | 13, 14 |
| Thomas Hunt | 12 |
| John Greitham | 38 |
| Tho. Wingrove | 53 |
| S. Wheticker | 80 |
| Gauntlet | 9 |
| Star <i>or Sun</i> | 5, 6, 8, 18, 19 |
| Wheel | 6 |
| Flower | 7 |
| Cross | 8 |
| <i>A</i> | 70 |
| Horseshoe | 72 |
| Thistle | 82 |
| Lamb & Flag | 84 |
| Grill | 86 |